



**GFA**  
**SYSTEM**  
FASCETTE DI BLOCCAGGIO

# Products **catalog**

---

## *Locking bands*

V-BAND  
CHIMNEY DUCTS  
STOVES  
EXTRACTION SYSTEMS  
COMMON



[WWW.GFASYSTEM.IT](http://WWW.GFASYSTEM.IT)





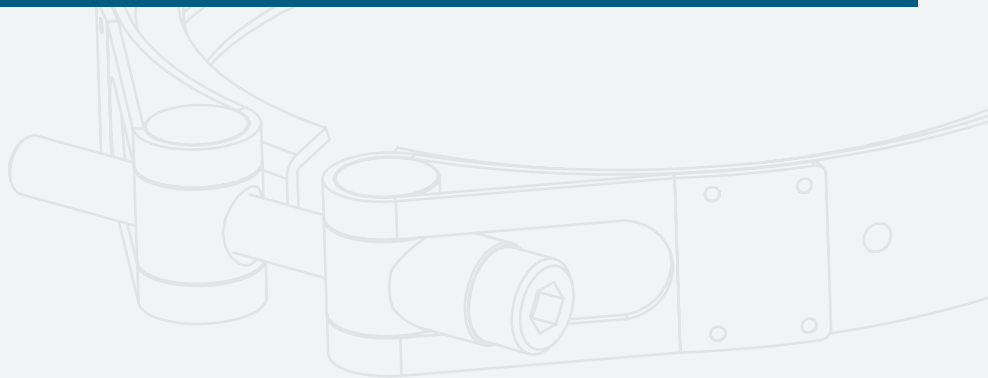
## COMPANY PROFILE

The company started up in 2001 and begins with the production of locking bands for stainless steel chimneys. Since 2006, GFA System Srl is **ISO 9001** certified and the continuous and targeted qualification of the employees is an important point in the company's development. Over the years it has become a medium-sized enterprise successfully positioned throughout Europe.

GFA System Srl has increased its production facilities through the purchase of additional spaces rising efficiency and productivity steadily, reaching to cover a total area of over **4500mq**. Extensive market analysis have allowed the company to expand to other market segments, such as ventilation systems, automotive, shipbuilding industry and all kind of other industrial plants.

At this time, GFA System Srl is one of the best locking band manufacturers in both, standard and special production capable to satisfy customer's requests.

Our principal production plant with its solar panels. This solar power plant gives a relevant contribute to our electric supply and is having a share in a healthier environment.



### GFA SYSTEM SRL

Via Cerbara, s.n.  
zona artigianale Cerbara di Piagge  
61038 Terre Roveresche (PU)  
ITALY

**Tel.** +39 0721.890014  
**Fax** +39 0721.890928  
**VAT Nr.** IT02500080417

**Web** [www.gfasystem.it](http://www.gfasystem.it)  
**Email** [info@gfasystem.it](mailto:info@gfasystem.it)



### TÜV SÜD CERTIFICATION

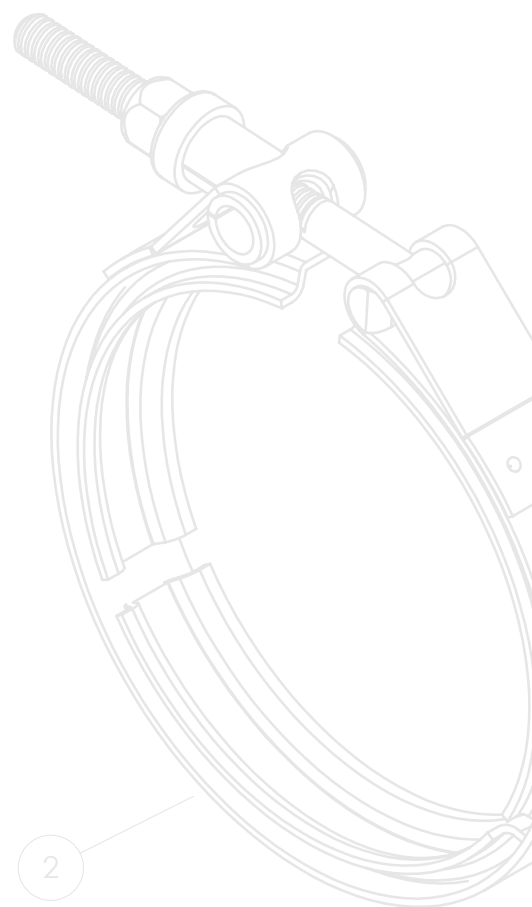
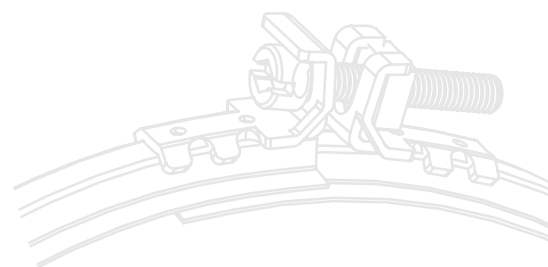
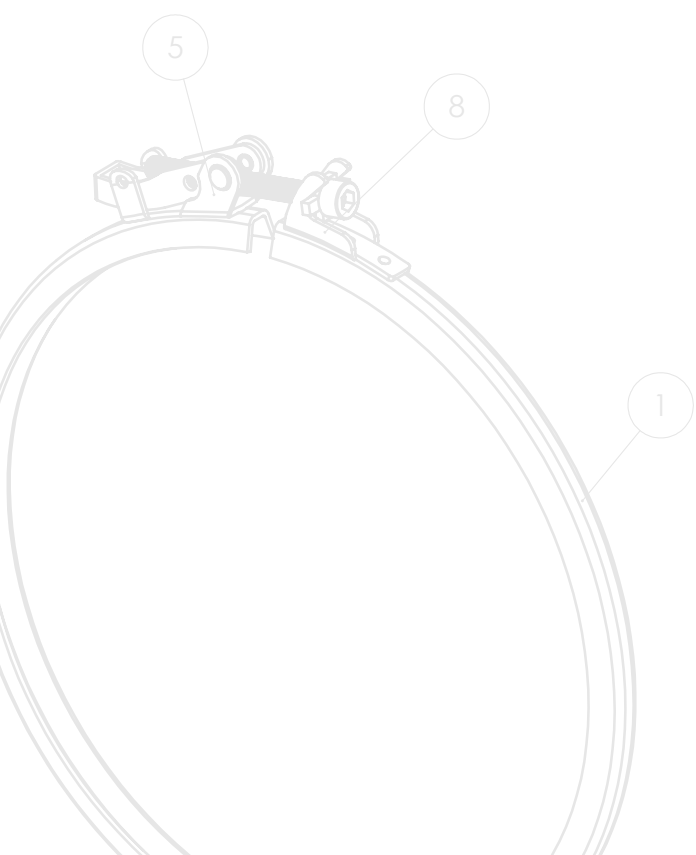
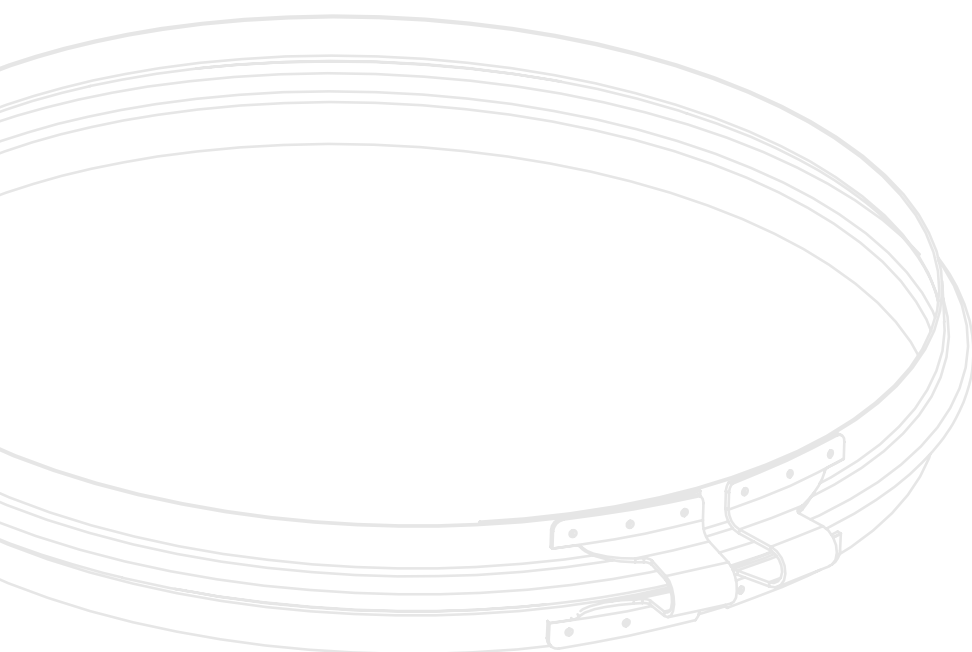
GFA System Srl is UNI EN ISO 9001:2008 certified by TÜV SÜD, ever since beside the companies in certification field. Products, fabrication as well as all kinds of processes are regularly monitored and improved in order to other high quality commodities.

# Products **catalog**

---

## *Locking bands*

V-BAND  
CHIMNEY DUCTS  
STOVES  
EXTRACTION SYSTEMS  
COMMON



**STANDARD V-BAND**  
Pag.02



Automotive  
Food processing industry  
Industrial plants  
Ship building industry

**SPECIAL V-BAND**  
Pag.06



**CHIMNEY DUCTS**  
Pag.08



Stainless steel collars  
Stainless steel and copper wall bracket  
Stainless steel and copper SW locking bands  
Stainless steel and copper DW locking bands

**STOVES**  
Pag.20



Collars  
Locking bands

**EXTRACTION SYSTEMS**  
Pag.22



Galvanized valves  
Galvanized collars  
Galvanized slim collars  
Galvanized rings

**COMMON**  
Pag.25



Common flat straps  
Common flat straps quick release

# V-BAND STANDARD



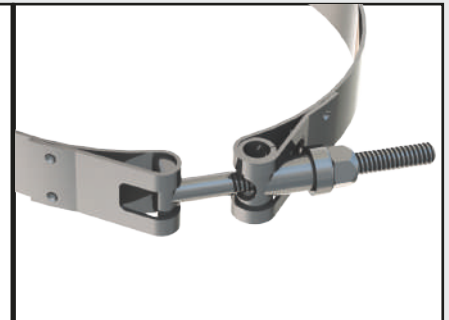
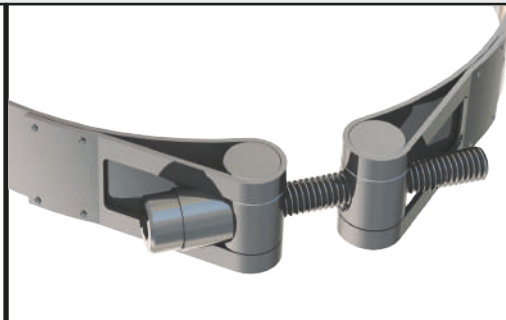
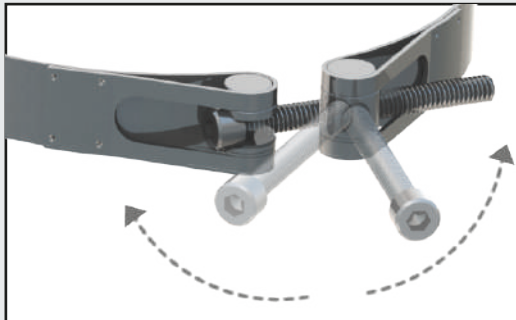
**Cod.L20**  
height 20mm

## CLOSURES TYPE

### RPD

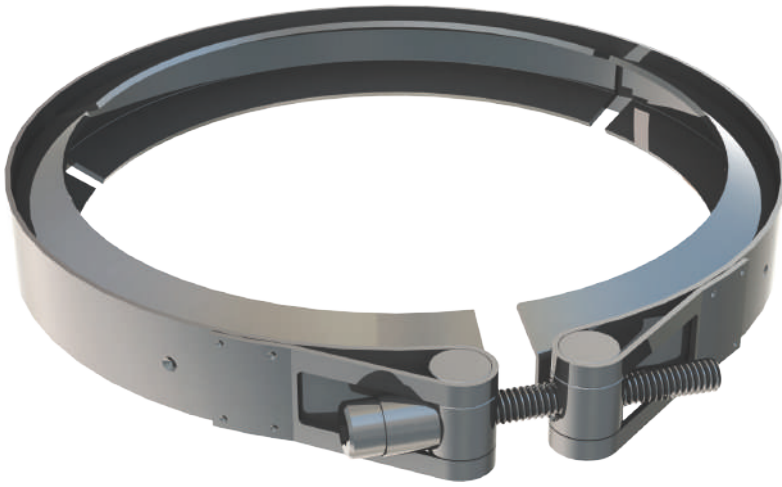
### STD

### MRT



RPD		STD		MRT
<b>L20</b> (from Ø70 to Ø500)	<b>L25</b> (from Ø130 to Ø700)	<b>L20</b> (from Ø70 to Ø500)	<b>L25</b> (from Ø130 to Ø700)	<b>L20</b> (from Ø70 to Ø500)
Stainless steel screw TCCE M6x50	Stainless steel screw TCCE M8x80	Stainless steel screw TCCE M6x50	Stainless steel screw TCCE M8x80	Stainless steel screw "T" M6x73
Nickel plated brass bolt with M6 thread	Nickel plated brass bolt with M8 thread	Nickel plated brass bolt with M6 thread	Nickel plated brass bolt with M8 thread	Stainless steel support for "T"
Quick release inox AISI 303 bolt	Quick release inox AISI 303 bolt	bolt with hole Ø6,20	Nickel plated bolt with hole Ø8,20 Nickel plated spacer H10	Zincate Hex Locknut
Maximum tightening torque: 5 Nm	Maximum tightening torque: 20 Nm	Maximum tightening torque: 10 Nm	Maximum tightening torque: 20 Nm	Maximum tightening torque: 15 Nm
<b>ADVANTAGES</b> Greater rapidity in tightening on the flanges It is not necessary to totally unscrew		<b>ADVANTAGES</b> Higher tightening torque than RPD CLOSURES TYPE		<b>ADVANTAGES</b> Higher tightening torque than STD CLOSURES TYPE
<b>NOT AVAILABLE FOR L25</b>				

# V-BAND STANDARD



**Cod.L25**  
height 25mm

## GL2S

## PML

	
<b>L20</b> ( from Ø100 to Ø500)	<b>L25</b> ( from Ø130 to Ø700)
Stainless steel hook lever TCCE M6x60 socket screw  Stainless steel Hooking bracket	Plastic knob with stainless steel screw M8 Nickel plated brass bolt with M8 thread Quick release inox AISI 303 bolt
Maximum tightening torque: 8 Nm	
<b>ADVANTAGES</b>	<b>ADVANTAGES</b>
It is possible to tighten it without using tools. Ideal for frequent maintenance.	It is possible to tighten it without using tools. Ideal for frequent maintenance.
<b>NOT AVAILABLE FOR L25</b>	<b>NOT AVAILABLE FOR L20</b>

## TECHNICAL DETAILS

V-Bands are connecting flanges deftly in many industrial segments and automotive. Their advantages are a high functionality, reduction of time of assembly as well during the first processing as during the following maintenance.

The outer strap grants the best distribution of forces and the sectors hurry up the assembly. Tightening is carried out by several available closure types.

# V-BAND STANDARD



Cod. A172

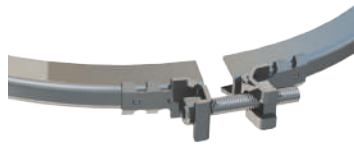
## TECHNICAL DETAILS

**MATERIAL:** 1.4301 stainless steel AISI 304 finish BA

**DIAMETER:** From 100 mm to 650 mm

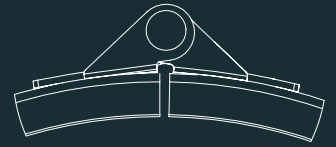
## ALTERNATIVE CLOSURE

Cod. A182



Stainless steel screw TCCE M5x40

Square nut M5 in nickel-plated brass



## HINGE

Made of stainless steel (1.43.01), thickness 15/10 and assembled with a 5mm diameter riveted stainless steel pin, the hinge allows an opening of the V-Band of over 180°.

# V-BAND AVAILABLE PROFILES FOR STANDARD V-BAND

W1			A2			D2			C2			Y1			E1		
L20	L25	A172	L20	L25	A172	L20	L25	A172	L20	L25	A172	L20	L25	A172	L20	L25	A172
✓	✗	✓	✓	✗	✓	✓	✗	✓	✓	✗	✓	✓	✗	✓	✓	✗	✓



# V-BAND

## AVAILABLE PROFILES FOR STANDARD V-BAND

<p><b>D1</b></p> <p>L20 <input checked="" type="checkbox"/> L25 <input checked="" type="checkbox"/> A172 <input checked="" type="checkbox"/></p>	<p><b>F1</b></p> <p>L20 <input checked="" type="checkbox"/> L25 <input checked="" type="checkbox"/> A172 <input checked="" type="checkbox"/></p>	<p><b>G1</b></p> <p>L20 <input checked="" type="checkbox"/> L25 <input checked="" type="checkbox"/> A172 <input checked="" type="checkbox"/></p>	<p><b>B1</b></p> <p>L20 <input checked="" type="checkbox"/> L25 <input checked="" type="checkbox"/> A172 <input checked="" type="checkbox"/></p>	<p><b>R1</b></p> <p>L20 <input checked="" type="checkbox"/> L25 <input checked="" type="checkbox"/> A172 <input checked="" type="checkbox"/></p>	<p><b>L2</b></p> <p>L20 <input checked="" type="checkbox"/> L25 <input checked="" type="checkbox"/> A172 <input checked="" type="checkbox"/></p>
<p><b>S1</b></p> <p>L20 <input checked="" type="checkbox"/> L25 <input checked="" type="checkbox"/> A172 <input checked="" type="checkbox"/></p>	<p><b>Q1</b></p> <p>L20 <input checked="" type="checkbox"/> L25 <input checked="" type="checkbox"/> A172 <input checked="" type="checkbox"/></p>	<p><b>A1</b></p> <p>L20 <input checked="" type="checkbox"/> L25 <input checked="" type="checkbox"/> A172 <input checked="" type="checkbox"/></p>	<p><b>Z1</b></p> <p>L20 <input checked="" type="checkbox"/> L25 <input checked="" type="checkbox"/> A172 <input checked="" type="checkbox"/></p>	<p><b>L1</b></p> <p>L20 <input checked="" type="checkbox"/> L25 <input checked="" type="checkbox"/> A172 <input checked="" type="checkbox"/></p>	<p><b>G2</b></p> <p>L20 <input checked="" type="checkbox"/> L25 <input checked="" type="checkbox"/> A172 <input checked="" type="checkbox"/></p>
<p><b>I2</b></p> <p>L20 <input checked="" type="checkbox"/> L25 <input checked="" type="checkbox"/> A172 <input checked="" type="checkbox"/></p>	<p><b>F2</b></p> <p>L20 <input checked="" type="checkbox"/> L25 <input checked="" type="checkbox"/> A172 <input checked="" type="checkbox"/></p>	<p><b>H2</b></p> <p>L20 <input checked="" type="checkbox"/> L25 <input checked="" type="checkbox"/> A172 <input checked="" type="checkbox"/></p>	<p><b>C1</b></p> <p>L20 <input checked="" type="checkbox"/> L25 <input checked="" type="checkbox"/> A172 <input checked="" type="checkbox"/></p>	<p><b>M1</b></p> <p>L20 <input checked="" type="checkbox"/> L25 <input checked="" type="checkbox"/> A172 <input checked="" type="checkbox"/></p>	<p><b>X1</b></p> <p>L20 <input checked="" type="checkbox"/> L25 <input checked="" type="checkbox"/> A172 <input checked="" type="checkbox"/></p>
<p><b>O1</b></p> <p>L20 <input checked="" type="checkbox"/> L25 <input checked="" type="checkbox"/> A172 <input checked="" type="checkbox"/></p>	<p><b>T1</b></p> <p>L20 <input checked="" type="checkbox"/> L25 <input checked="" type="checkbox"/> A172 <input checked="" type="checkbox"/></p>	<p><b>E1</b></p> <p>L20 <input checked="" type="checkbox"/> L25 <input checked="" type="checkbox"/> A172 <input checked="" type="checkbox"/></p>	<p><b>N1</b></p> <p>L20 <input checked="" type="checkbox"/> L25 <input checked="" type="checkbox"/> A172 <input checked="" type="checkbox"/></p>	<p><b>I1</b></p> <p>L20 <input checked="" type="checkbox"/> L25 <input checked="" type="checkbox"/> A172 <input checked="" type="checkbox"/></p>	<p><b>U1</b></p> <p>L20 <input checked="" type="checkbox"/> L25 <input checked="" type="checkbox"/> A172 <input checked="" type="checkbox"/></p>
<p><b>P1</b></p> <p>L20 <input checked="" type="checkbox"/> L25 <input checked="" type="checkbox"/> A172 <input checked="" type="checkbox"/></p>					



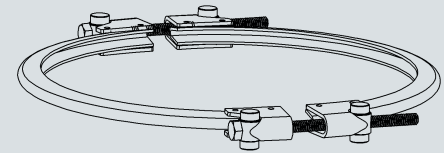
Cod.S372

## TECHNICAL DETAILS

Stainless steel screw TCCE M6x100

Nickel-plated brass pawl with hole  $\varnothing$  6,2

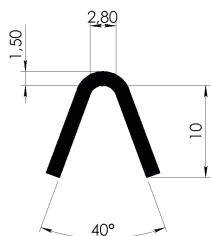
Nickel-plated brass pawl with thread M6



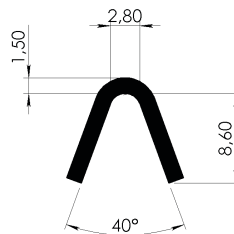
## CLAMPING IN TWO PARTS

V-Bands in two parts with double closure are the best solution to reach a superior force. During the assembly it is very important to pay attention of cranking the closures in the same way in order to obtain the maximum tightening.

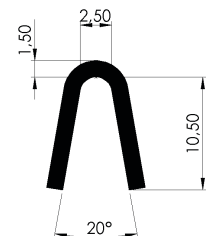
A1

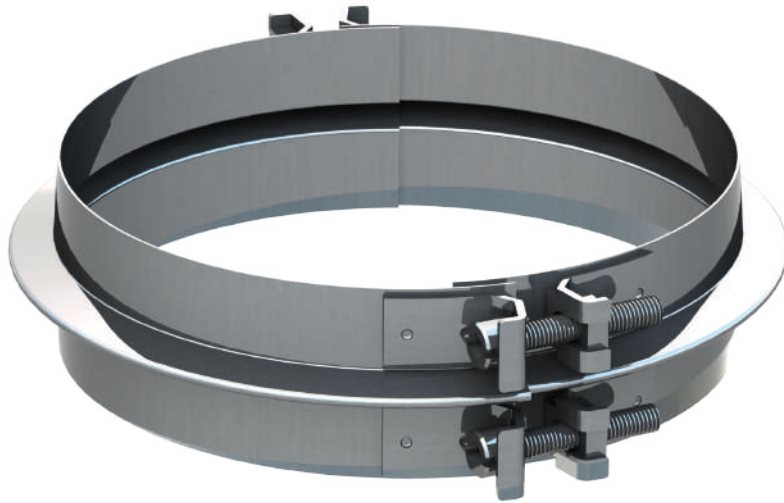


Q1



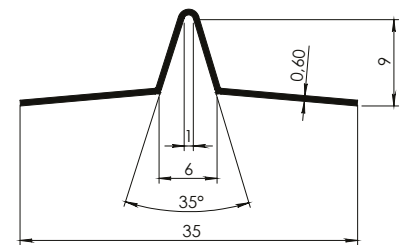
V1





**Cod.744**

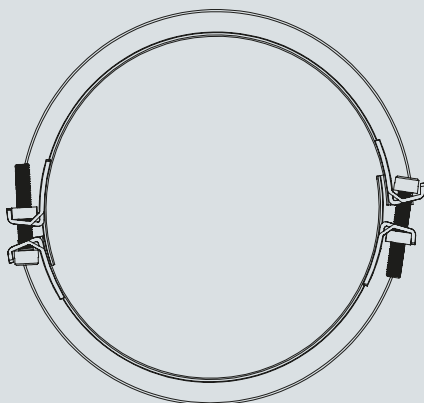
**PROFILE**



**TECHNICAL DETAILS**

N.4 stainless steel screws TCCE M5x30

N.4 square nuts in nickel-plated brass M5



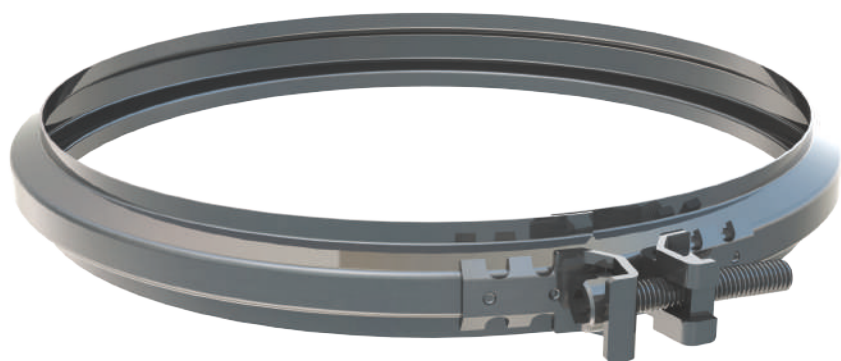
**FASTENER SYSTEM**

This V-Band is produced in two parts with four closures in order to obtain a strong fastening. During the installation, it is suitable to tighten the closures equally in order to gain the fastening needed.

# CHIMNEY DUCTS

STAINLESS STEEL SW LINE & COPPER SW LINE

## STANDARD



### LOCKING SYSTEM

**Cod. 102**



**TIGHTENING**

Stainless steel screw TCCE M5x30  
Square nut M5 in nickel-plated brass

**Cod. 492**



**TIGHTENING**

Stainless steel screw TCCE M6x40

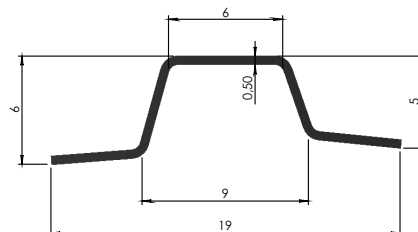
**Cod. S322**



**TIGHTENING**

Stainless steel lever hook with spring clip  
Toothed stainless steel bracket

### PROFILE

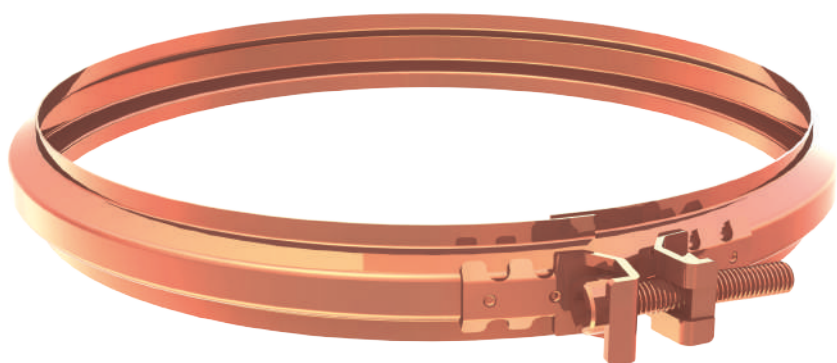


### TECHNICAL DETAILS

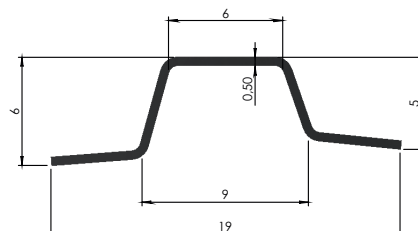
**MATERIAL:** 1.4301 AISI 304 stainless steel BA finish

**DIAMETER:** From 80 mm to 800 mm

## Cod.103



### PROFILE



### TECHNICAL DETAILS

**MATERIAL:** Half-hard copper DHP 99.9

**DIAMETER:** From 80 mm to 800 mm

**TIGHTENING:** Stainless steel TCCE M5x30 copper screw  
Copper M5 nut

# CHIMNEY DUCTS

STAINLESS STEEL SW LINE

## Cod. 302



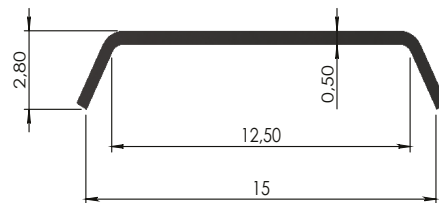
### TECHNICAL DETAILS

**MATERIAL:**  
1.4301 AISI 304 stainless steel BA finish

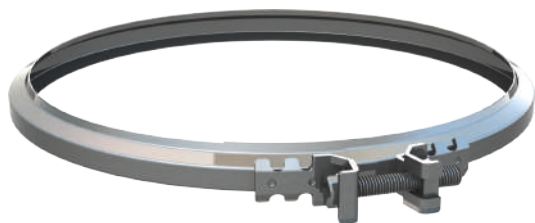
**DIAMETER:**  
From 80 mm to 500 mm

**TIGHTENING:**  
Stainless steel TCCE M5x30  
Nut M5 in nickel-plated brass

### PROFILE



## Cod. 112



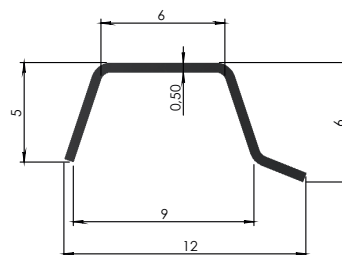
### TECHNICAL DETAILS

**MATERIAL:**  
1.4301 AISI 304 stainless steel BA finish

**DIAMETER:**  
From 60 mm to 500 mm

**TIGHTENING:**  
Stainless steel screw TCCE M5x30  
Nut M5 in nickel-plated brass

### PROFILE



## Cod. 252



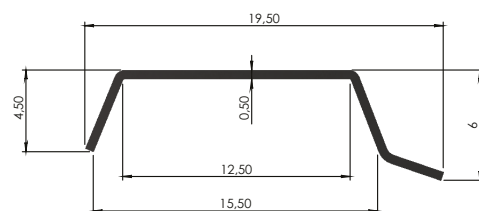
### TECHNICAL DETAILS

**MATERIAL:**  
1.4301 AISI 304 stainless steel BA finish

**DIAMETER:**  
From 80 mm to 500 mm

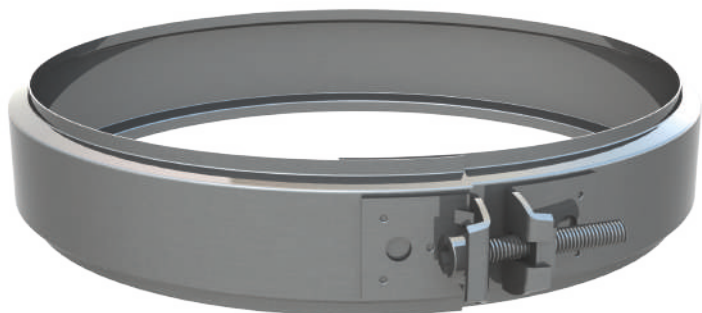
**TIGHTENING:**  
Stainless steel screw TCCE M5x30  
Nut M5 in nickel-plated brass

### PROFILE



# CHIMNEY DUCTS

## STAINLESS STEEL DW LINE

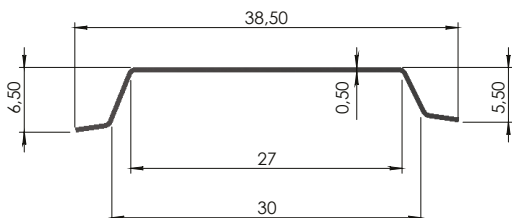


### TECHNICAL DETAILS

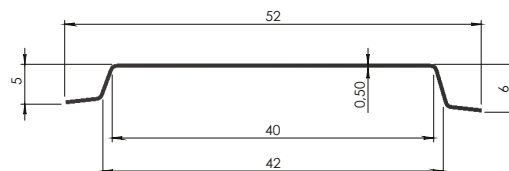
**MATERIAL:** 1.4301 stainless steel AISI 304 BA finish

**DIAMETERS:** From 80 mm to 1000 mm

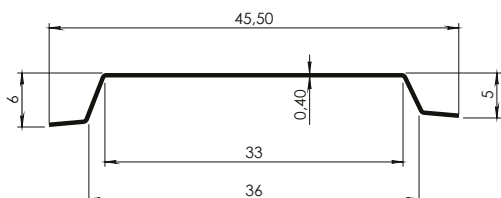
#### PROFILE L30



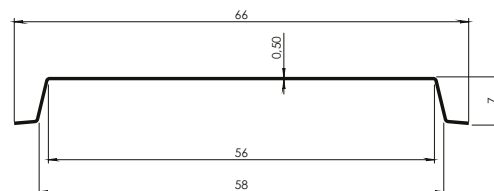
#### PROFILE L42



#### PROFILE L36

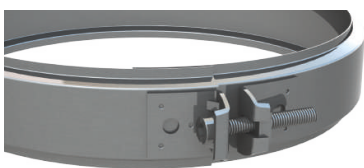


#### PROFILE L58



### LOCKING SYSTEM

#### mod. C



##### TIGHTENING

Stainless steel screw TCCE M6x40  
Square nut M6 in nickel-plated brass

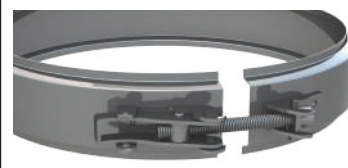
#### mod. GL2



##### TIGHTENING

Stainless steel lever hook with spring clip  
Toothed stainless steel bracket

#### mod. GL2S

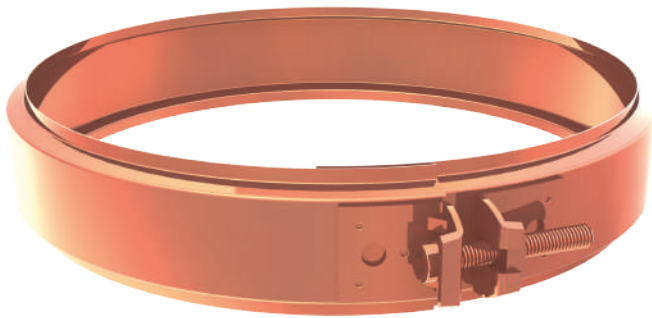


##### TIGHTENING

Stainless steel lever hook & screw TCCE M6x60  
Stainless steel hooking bracket

# CHIMNEY DUCTS

COPPER DW LINE



## TECHNICAL DETAILS

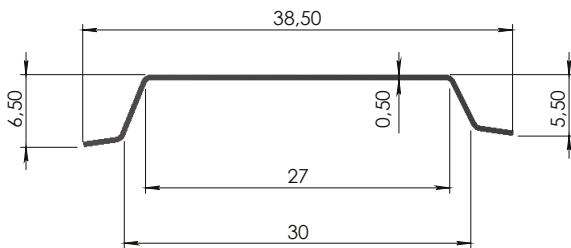
**MATERIAL:** Half-hard copper DHP 99.9

**DIAMETERS:** From 120 mm to 800 mm

**TIGHTENING:** Stainless steel TCCE M6x40 copper screw  
Copper M6 nut

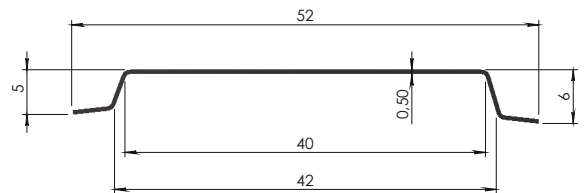
### PROFILE L30

Cod. 143



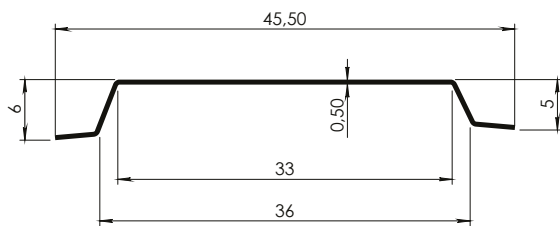
### PROFILE L42

Cod. 153



### PROFILE L36

Cod. 433



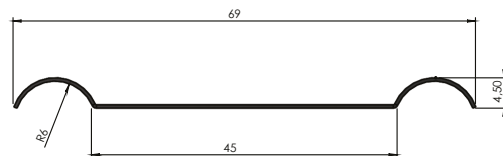
# CHIMNEY DUCTS

SPECIAL STAINLESS STEEL DW LINE

## Cod. 332



### PROFILE



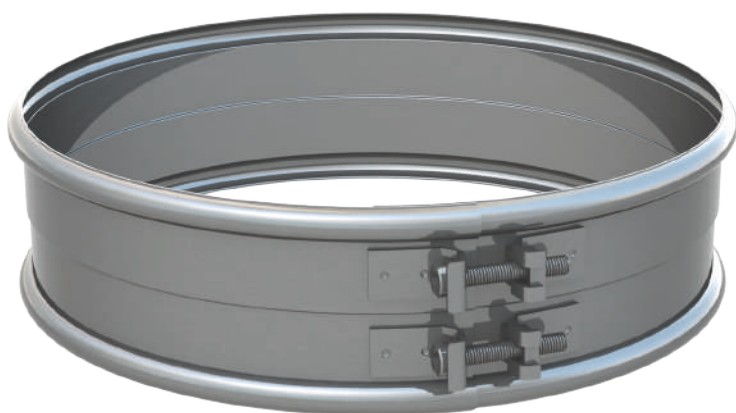
### TECHNICAL DETAILS

**MATERIAL:** 1.4301 AISI 304 stainless steel BA finish

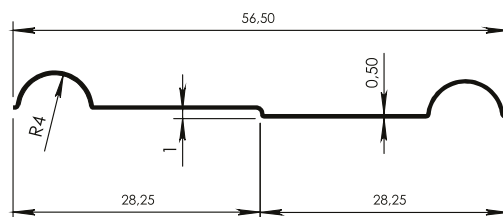
**DIAMETER:** From 130 mm to 800 mm

**TIGHTENING:** Stainless steel screw TCCE M6x40  
Nut M6 in nickel-plated brass

## Cod. 362



### PROFILE



### TECHNICAL DETAILS

**MATERIAL:** 1.4301 AISI 304 stainless steel BA finish

**DIAMETER:** From 80 mm to 800 mm

**TIGHTENING:** n. 2 stainless steel screws TCCE M5x50  
n. 2 M5 nuts in nickel-plated OT



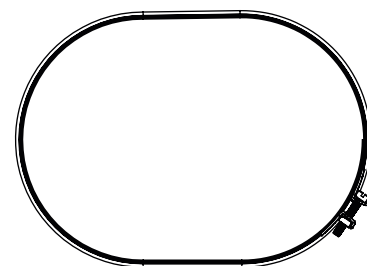
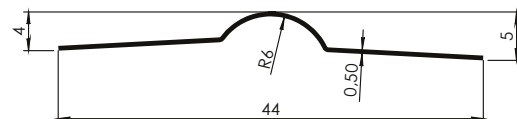
# CHIMNEY DUCTS

## OVAL DW LINE

Cod. **632**



### PROFILE



### TECHNICAL DETAILS

**MATERIAL:** 1.4301 AISI 304 stainless steel BA finish

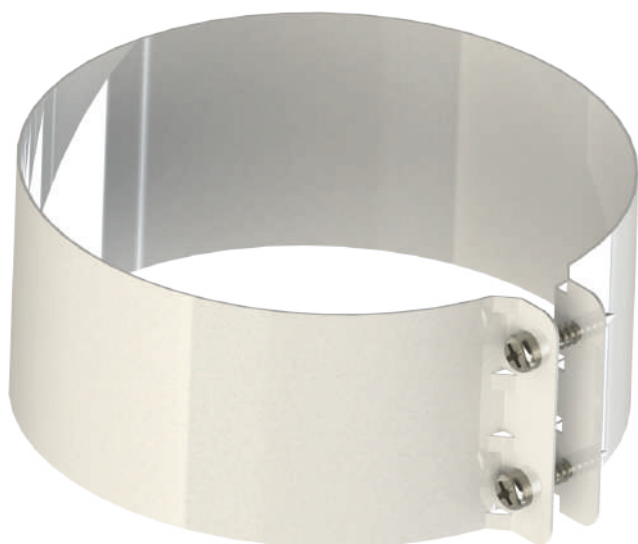
**DIAMETER:** According to customer request

**TIGHTENING:** n. 2 stainless steel screws TCCE M5x30  
n. 2 M5 nuts in nickel-plated brass

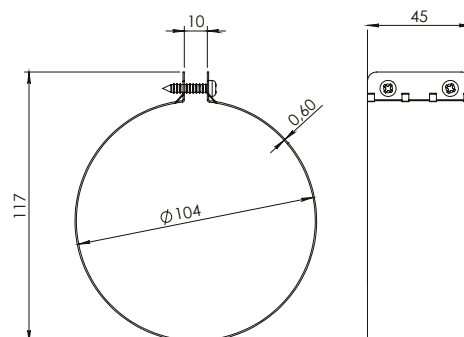
# CHIMNEY DUCTS

## ALUMINUM LINE

Cod. **646**



### PROFILE



### TECHNICAL DETAILS

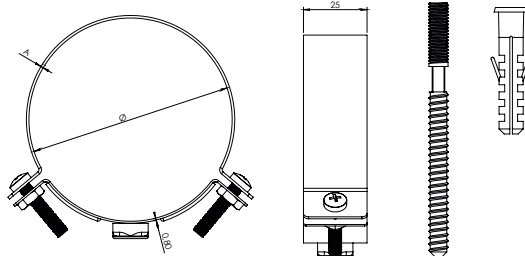
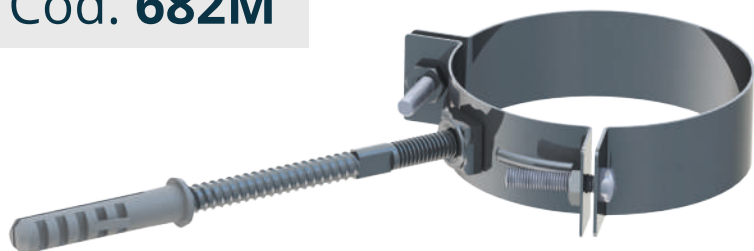
**MATERIAL:**  
Galvanized steel painted white RAL 9003

**TIGHTENING:**  
n. 2 self-tapping zinc-plated screws TC 3,9x19

# CHIMNEY DUCTS

## PIPE CLAMPS

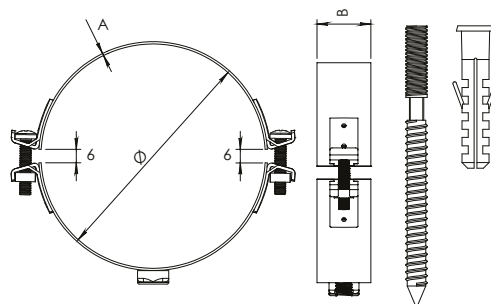
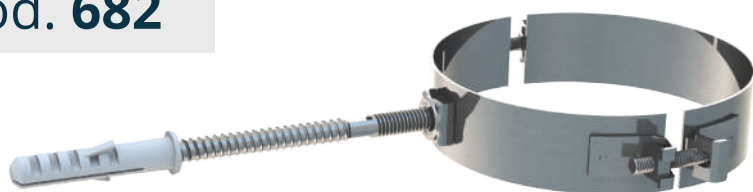
Cod. **682M**



### TECHNICAL DETAILS

Diameters	A	Tightening	Material
From $\varnothing$ 80 to $\varnothing$ 110	0,80	N ° 2 stainless steel screws TC M5x25	stainless steel AISI 304 BA finish (1.4301)
From $\varnothing$ 120 to $\varnothing$ 200	1,00	Galvanized bar double thread M8x100	
From $\varnothing$ 220 to $\varnothing$ 300	1,20	Nylon anchor $\varnothing$ 10	

Cod. **682**



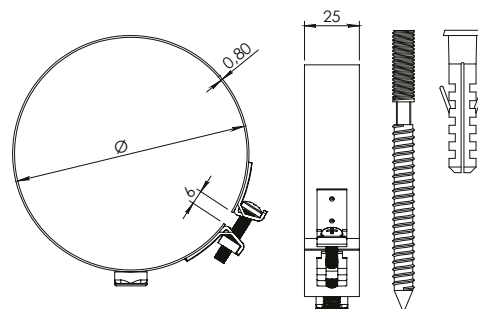
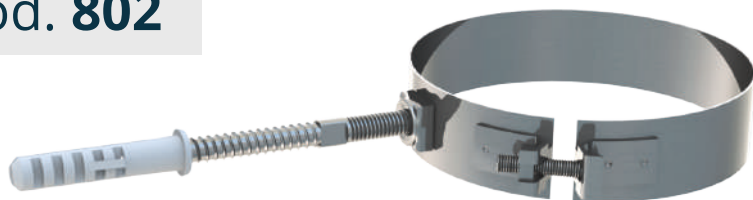
### TECHNICAL DETAILS

Diameters	A	B	Tightening	Material
From $\varnothing$ 60 to $\varnothing$ 79	0,80	20	2 stainless steel screws TC M4x30 2 M4 nuts in nickel-plated brass Double thread galvanized bar M8x100 Nylon anchor $\varnothing$ 10	stainless steel AISI 304 BA finish (1.4301)
From $\varnothing$ 80 to $\varnothing$ 100	0,80	25	2 stainless steel screws TC M5x25 2 M5 nuts in nickel-plated brass Double thread galvanized bar M8x100 Nylon anchor $\varnothing$ 10	
From $\varnothing$ 101 to $\varnothing$ 500	1,00	25	Nylon anchor $\varnothing$ 10	

# CHIMNEY DUCTS

## PIPE CLAMPS

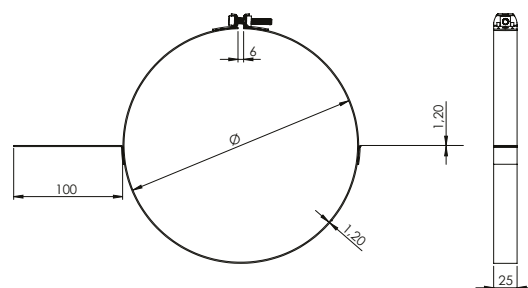
Cod. **802**



### TECHNICAL DETAILS

Diameters	Tightening	Material
from $\varnothing$ 60 to $\varnothing$ 400	Stainless steel screw TC M5x25 Nut M5 in nickel-plated brass Double thread galvanized bar M8x100 Nylon anchor $\varnothing$ 10	<i>AISI 304 stainless steel BA finish (1.4301)</i>

Cod. **792**



### TECHNICAL DETAILS

**MATERIAL:** 1.4301 AISI 304 stainless steel BA finish

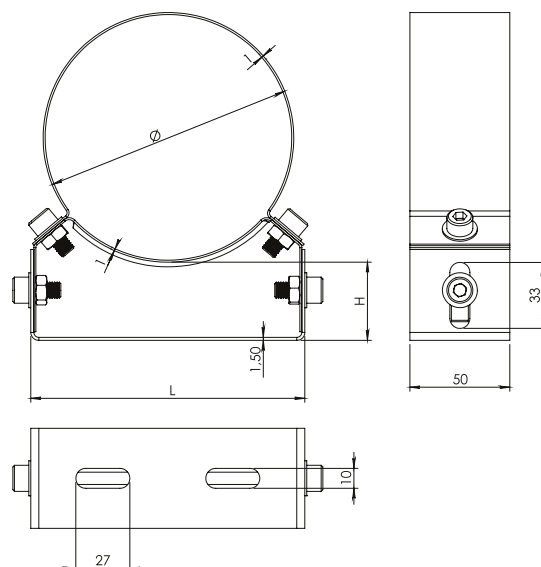
**DIAMETER:** From 80 mm to 400 mm

**TIGHTENING:** Stainless steel screw TCCE M6x40  
Nut M6 nickel-plated brass

# CHIMNEY DUCTS

## ADJUSTABLE STAINLESS STEEL WALL CLAMPS

Cod. **172D**



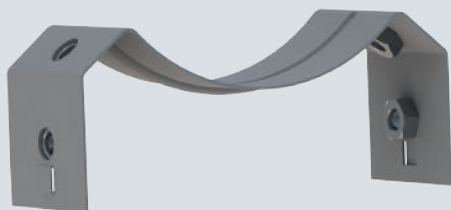
### TECHNICAL DETAILS

**MATERIAL:** 1.4301 AISI 304 stainless steel BA finish

**TIGHTENING:** N.4 stainless steel screws TCCE M8x16  
with captive rosette

N.4 welded M8 stainless steel hex nuts

The wall clamp Code 172D thanks **to welded nuts and screws with captive washers** allows the installer to install quickly and easily.



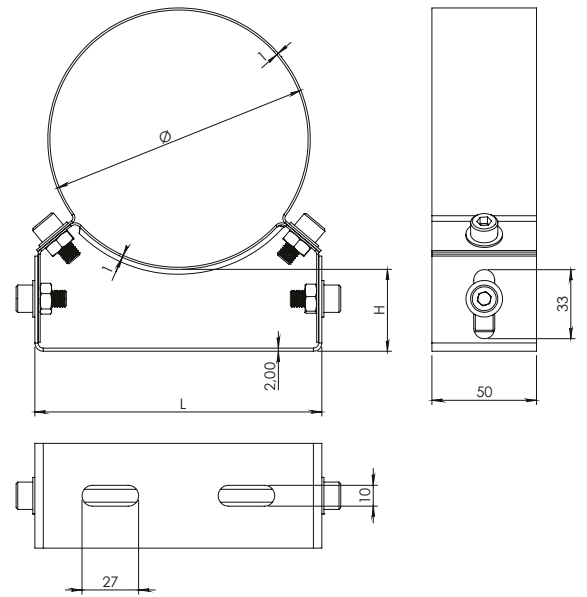
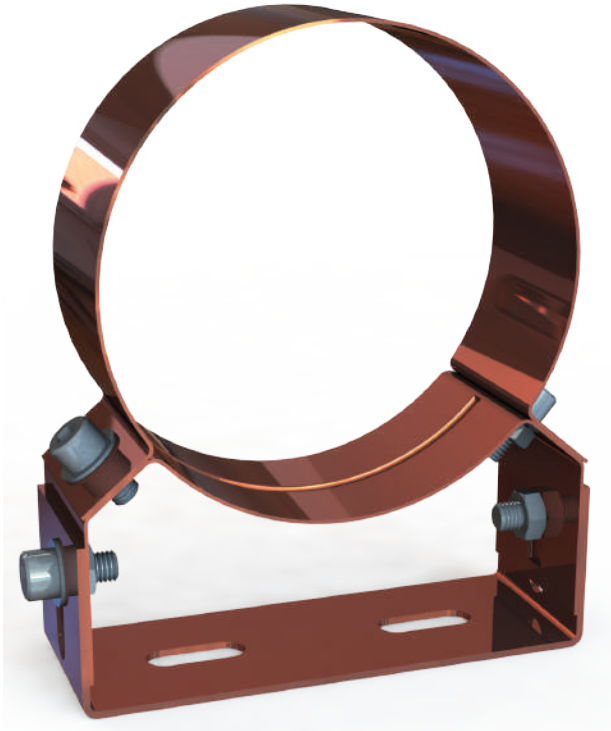
### AVAILABLE MEASURES

$\varnothing$	L	H (min. - max)
80	107	44 - 54
100	107	44 - 54
120	137	40 - 50
125	137	40 - 50
130	137	40 - 50
140	137	55 - 80
150	167	47 - 73
160	167	47 - 73
180	167	47 - 73
200	187	50 - 76
220	187	50 - 76
230	207	47 - 73
250	207	47 - 73
270	207	47 - 73
300	257	32 - 59
350	257	38 - 64
400	307	25 - 50

# CHIMNEY DUCTS

## ADJUSTABLE COPPER WALL CLAMPS

Cod. 173D



### TECHNICAL DETAILS

**MATERIAL:** Half-hard copper DHP 99.9

**TIGHTENING:** N.4 stainless steel screws TCCE M8x16 with captive rosette  
N.4 flanged hex nuts M8

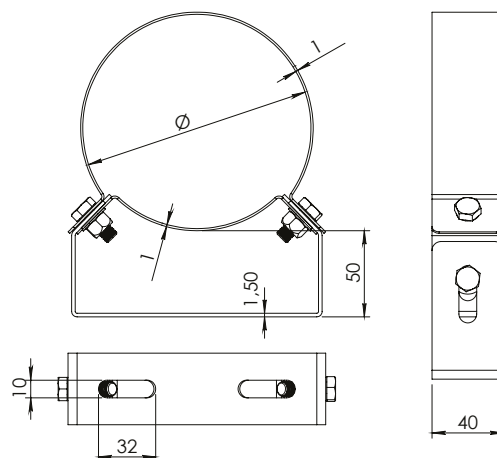
### AVAILABLE MEASURES

$\varnothing$	L	H (min. - max)
80	107	44 - 54
100	107	44 - 54
120	137	40 - 50
125	137	40 - 50
130	137	40 - 50
140	137	55 - 80
150	167	47 - 73
160	167	47 - 73
180	167	47 - 73
200	187	50 - 76
220	187	50 - 76
230	207	47 - 73
250	207	47 - 73
270	207	47 - 73
300	257	32 - 59
350	257	38 - 64
400	307	25 - 50

# CHIMNEY DUCTS

## STAINLESS STEEL WALL CLAMPS

Cod. 132



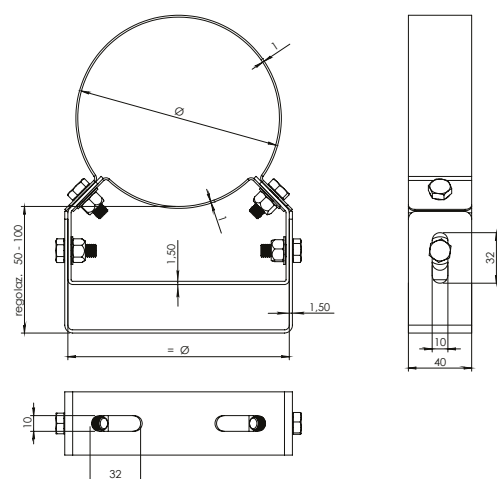
### TECHNICAL DETAILS

**MATERIAL:** 1.4301 AISI 304 stainless steel BA finish

**DIAMETER:** From 80 mm to 800 mm

**TIGHTENING:** 2 stainless steel screws TCCE M8x20  
2 stainless steel M8 nuts

Cod. 172



### TECHNICAL DETAILS

**MATERIAL:** 1.4301 AISI 304 stainless steel BA finish

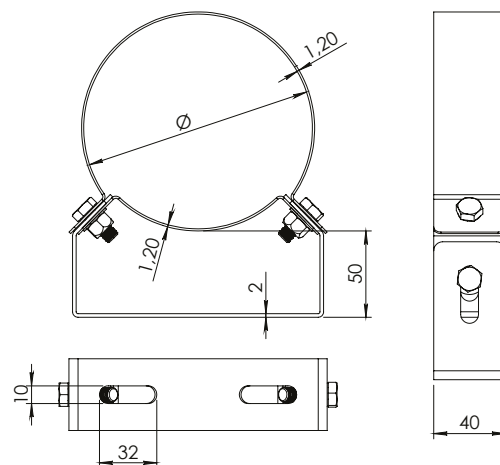
**DIAMETER:** From 80 mm to 500 mm

**TIGHTENING:** N.4 stainless steel screws TCCE M8x20  
N.4 stainless steel M8 nuts

# CHIMNEY DUCTS

## COPPER WALL CLAMPS

Cod. 133



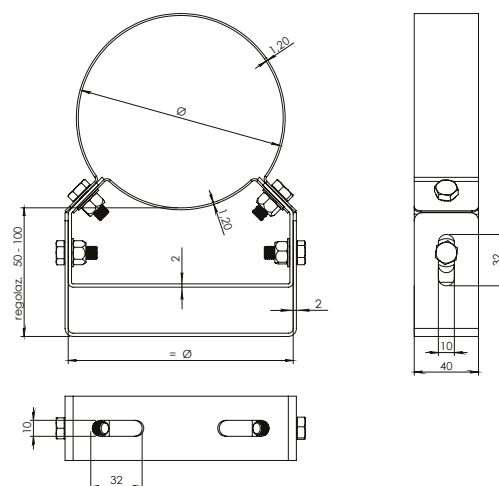
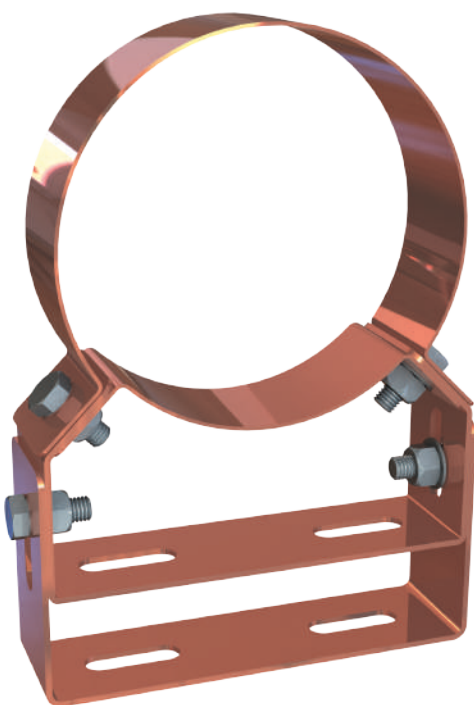
### TECHNICAL DETAILS

**MATERIAL:** Half-hard copper DHP 99.9

**DIAMETER:** From 80 mm to 600 mm

**TIGHTENING:** 2 stainless steel screws TCCE M8x20  
2 stainless steel M8 nuts

Cod. 173



### TECHNICAL DETAILS

**MATERIAL:** Half-hard copper DHP 99.9

**DIAMETER:** From 80 mm to 500 mm

**TIGHTENING:** N.4 stainless steel screws TCCE M8x20  
N.4 stainless steel M8 nuts

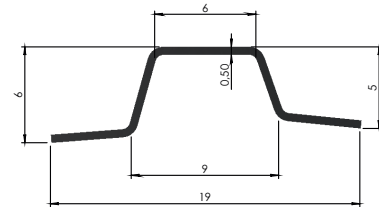
# STOVES

## LOCKING CLAMPS LINE

### Cod. 108



#### PROFILE



#### TECHNICAL DETAILS

**MATERIAL:** Matt black painted galvanized steel

**DIAMETER:** From 80 mm to 200 mm

**TIGHTENING:** Stainless steel screw TC M5x25 black  
Square nut M5 in black brass

# STOVES

## PIPE CLAMPS LINE

### Cod. 938



*Carved bracket for distance adjustment from the wall*

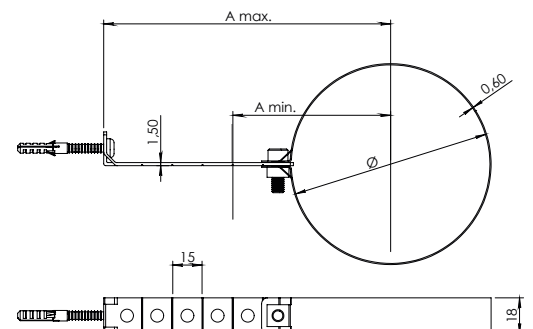
#### TECHNICAL DETAILS

**MATERIAL:** High tempara black painted galvanized steel

**TIGHTENING:** Galvanized screw TCCE M6x16 black  
Galvanized screw TC M4x30 black  
Square nut M6 in black galvanized brass  
Nylon anchor Ø5

#### TECHNICAL DETAILS

Ø	A min	A max
80	100	175
100	120	195
120	140	215

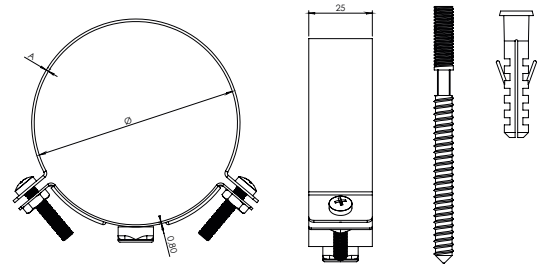




# STOVES

## PIPE CLAMPS COLLAR LINE

Cod. **688M**



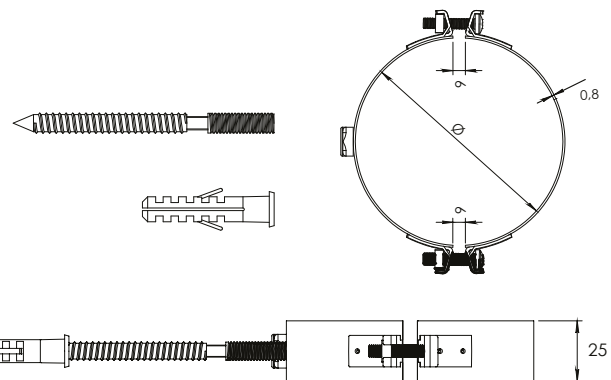
### TECHNICAL DETAILS

Diameters	A	Tightening	Material
from Ø 80 to Ø 110	0,80	N ° 2 black galvanized TC M5x25 stainless steel screws Black galvanized double thread M8x100 bar Nylon anchor Ø10	<b>Matt black galvanized AISI 304 stainless steel</b> , the type of RAL can be defined on customer request
from Ø 120 to Ø 200	1,00		
from Ø 220 to Ø 300	1,20		

Cod. **688**



The collar is made of **matt black galvanized steel**, on request the customer can define the type of RAL



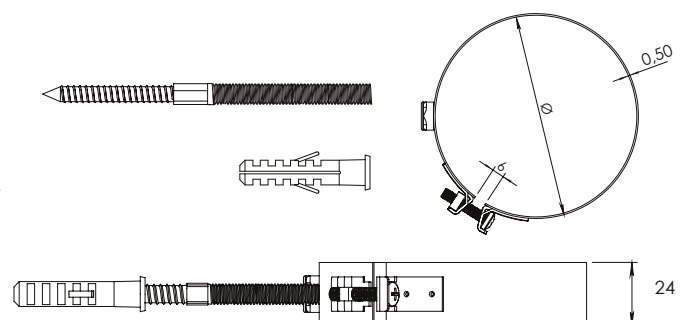
### TECHNICAL DETAILS

<b>DIAMETER:</b>	From 80 mm to 200 mm
<b>TIGHTENING:</b>	N. 2 black galvanized TC M5x25 stainless steel screws N. 2 square nuts M5 in black galvanized brass Double thread galvanized bar M8x100

Cod. **808**



The collar is made of **matt black galvanized steel**, on request the customer can define the type of RAL



### TECHNICAL DETAILS

Diameters	Tightening
da Ø 80 a Ø 120	Black zinc-plated stainless steel screw TC M5x25 Nut M5 in black galvanized brass Double thread galvanized bar M8x100 Nylon anchor Ø10

# EXTRACTION SYSTEMS

## GALVANIZED AND STAINLESS STEEL COLLARS

### Cod. 761



#### TECHNICAL DETAILS

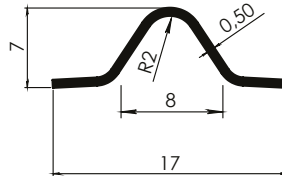
**MATERIAL:** Galvanized steel

**DIAMETER:** From 80 mm to 500 mm

**TIGHTENING:** Galvanized screw  
TCCE M6x50 (on customer request)

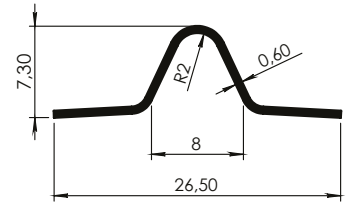
#### PROFILE

for collars included  
from Ø80 to Ø110



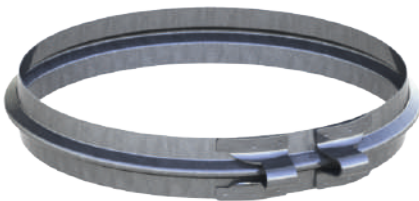
#### PROFILE

for collars included  
from Ø120 to Ø500



*The collar can also be made of stainless steel AISI 304 BA (1.4301)*

### Cod. 341



#### TECHNICAL DETAILS

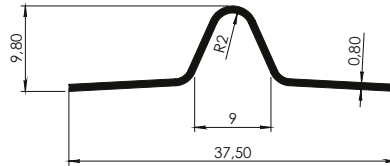
**MATERIAL:** Galvanized steel

**DIAMETER:** From 180 mm to 1000 mm

**TIGHTENING:** Galvanized bar M8x130  
2 x M8 flanged hex nuts (on customer request)

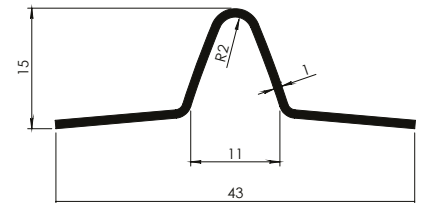
#### PROFILE G9

for collars included  
from Ø180 to Ø550



#### PROFILE G11

for collars included  
from Ø560 to Ø1000



### Cod. 342



#### TECHNICAL DETAILS

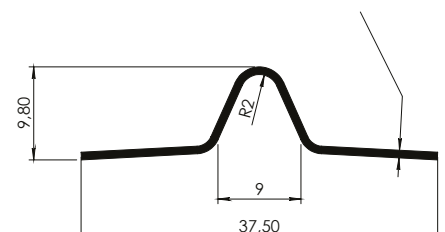
**MATERIAL:** EN 1.4301 AISI 304 stainless steel

**DIAMETER:** from Ø180 to Ø1000

**TIGHTENING:** Stainless steel screw TE M8x100  
Stainless steel flanged hex nut M8

#### PROFILE

The thickness of the profile varies  
according to the diameter  
from Ø180 al Ø550 Sp. = 0,6mm  
from Ø560 al Ø1000 Sp. = 0,8mm



# EXTRACTION SYSTEMS

## GALVANIZED RINGS



### TECHNICAL DETAILS

**MATERIAL:** Galvanized steel

**TIGHTENING:** Galvanized screw TCCE M6x50  
(on customer request)

#### Cod. 311

galvanized rings G6	
Ø 80 to Ø 200	

#### Cod. 291

galvanized rings G8		
Ø 110 to Ø 252	Ø 255 to Ø 600	
Th. 0,80	Th. 1,00	

#### Cod. A231

galvanized rings G10		
Ø 200 to Ø 252	Ø 255 to Ø 600	
Th. 0,80	Th. 1,00	

# EXTRACTION SYSTEMS

## STAINLESS STEEL RINGS



### TECHNICAL DETAILS

**MATERIALE:** EN 1.4301 AISI 304 stainless steel

**SERRAGGIO:** Stainless steel screw TCCE M6x40  
(on customer request)

#### Cod. 312

stainless steel rings G6	
Ø 80 to Ø 200	

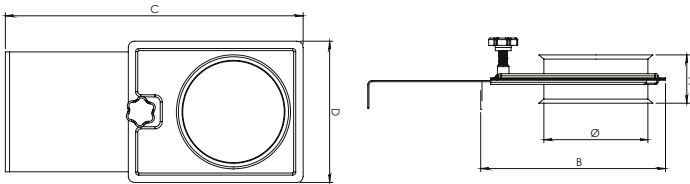
#### Cod. 292

stainless steel rings G8		
Ø 110 to Ø 252	Ø 255 to Ø 600	
Th. 0,80	Th. 1,00	

# EXTRACTION SYSTEMS

## MANUAL OPERATED GALVANIZED VALVES

Cod. 891



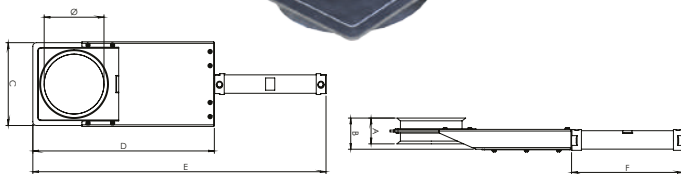
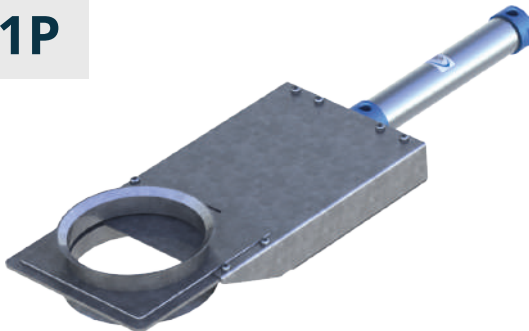
### AVAILABLE MEASURES

Ø	A	B	C	D
80	38	145	233	119
100	43	177	285	135
120	49	208	336	156
125	51	208	336	156
140	52	239	387	176
150	50	254	411	186
160	52	270	438	197
180	54	304	491	219
200	57	334	540	240
225	70	360	662	260

# EXTRACTION SYSTEMS

## PNEUMATIC OPERATED GALVANIZED VALVES

Cod. 891P

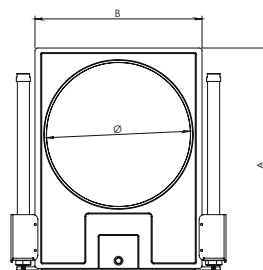
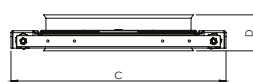
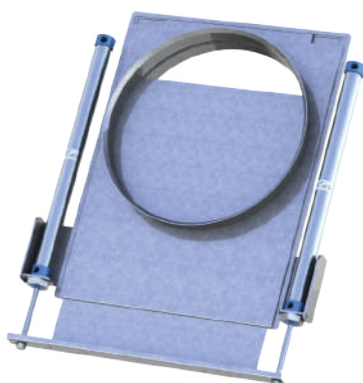


### AVAILABLE MEASURES

Ø	A	B	C	D	E	F
80	38	49	119	225	415	160
100	43	52	135	298	478	180
120	49	56	156	336	536	200
125	51	57	156	336	536	200
140	52	57	176	377	579	220
150	50	56	186	397	627	230
160	52	56	197	417	627	240
180	54	56	219	457	747	260
200	57	56	240	502	782	280
225	70	70	260	545	845	300

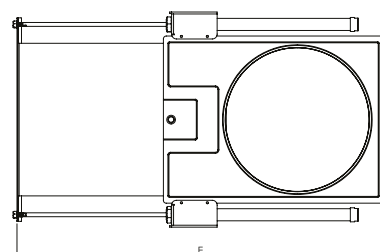
*On request it is possible to have the pneumatic shutter equipped with 24V solenoid valve*

Cod. 891 2P



### AVAILABLE MEASURES

Ø	A	B	C	D	E
250	400	295	385	70	660
280	440	325	415	70	730
300	470	345	440	72	780

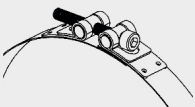
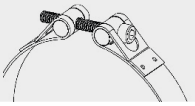
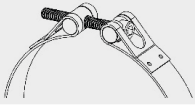
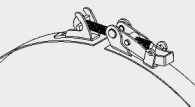
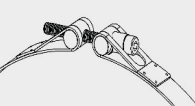


# COMMON

## FLAT CLAMP HEAVY LINE

Cod. **S122**



Locking system	tightening screw	Width Strap (L)	Thickness Strap (Sp.)	Max. tightening torque	Diameters	Material and components
<b>Cod. S382</b> 	M6	18mm	0,50	5 Nm	From Ø100 to Ø500	Strap in AISI 304 stainless steel Pawls in nickel-plated brass Stainless steel screw TCCE M6x50 (on request)
<b>Cod. S122-STD6</b> 	M6	20	0,80	10 Nm	From Ø80 to Ø119	Strap in AISI 304 stainless steel Pawls in nickel-plated brass Stainless steel screw TCCE M6x50 (on request)
			1,20		From Ø120 to Ø500	
<b>Cod. S122-RPDM6</b> 	M6	20	0,80	10 Nm	From Ø80 to Ø119	Strap in AISI 304 stainless steel Pawls in stainless steel and nickel-plated brass Stainless steel screw TCCE M6x50 (on request)
			1,20		From Ø120 to Ø500	
<b>Cod. S122-GL2S</b> 	M6	20	0,80	8 Nm	From Ø120 to Ø500	Strap in AISI 304 stainless steel Locking system with adjustable lever with TCCE stainless steel screw M6x60
<b>Cod. S122-STD8</b> 	M8	25	1,50	30 Nm	From Ø140 to Ø700	Strap in AISI 304 stainless steel Pawls in nickel-plated brass Nickel-plated brass spacer Stainless steel screw TCCE M6x50 (on request)



## CUSTOMIZED PRODUCTION

In addition to the models contained in this catalogue, GFA SYSTEM SRL is able to realize quite every kind of locking bands depending on the customer's needs as well as on the application area.

Our technical department will assist the customer during the entire process starting with the research and planning up to the development of prototypes and ending with the regular series production.

# General terms and conditions

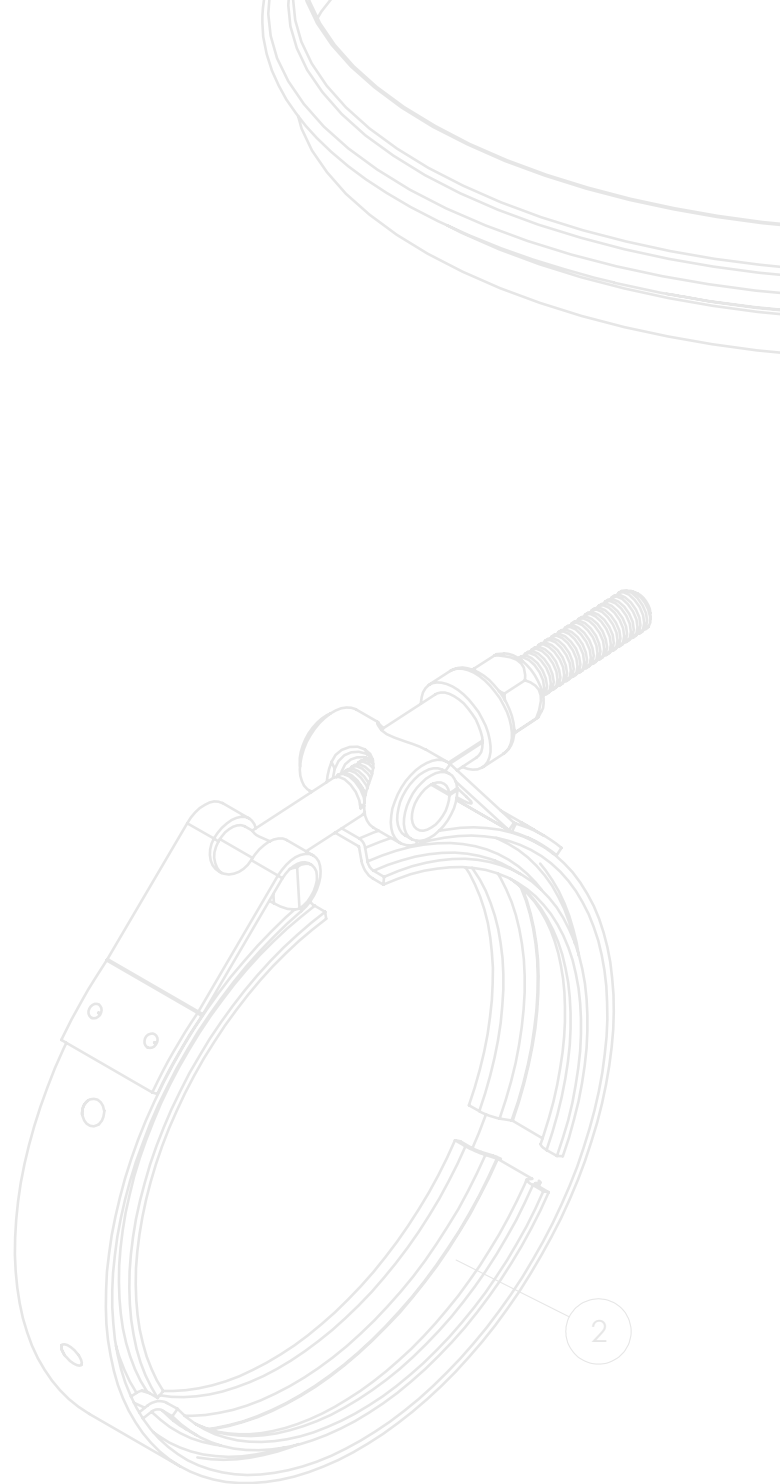
Complaints will be accepted in accordance with the Italian Civil Code, sections 1495 – 1511. No goods should be returned without prior agreement.

In accordance with the Italian Civil Code, sections 1218-1219, in the presence of late payments, default interests will be charged.

Place of venue is Pesaro and no other venue should be accepted.

*All rights for reproduction, distribution and processing, as well as for translation reserved.*

*Without prior permission, it is not allowed to reproduce in any form any part of this catalogue.*



## GFA SYSTEM SRL

Via Cerbara, s.n.  
zona artigianale Cerbara di Piagge  
61038 Terre Roveresche (PU)  
ITALY

**Tel.** +39 0721.890014  
**Fax** +39 0721.890928  
**VAT Nr.** IT02500080417

**Web** [www.gfasystem.it](http://www.gfasystem.it)  
**Email** [info@gfasystem.it](mailto:info@gfasystem.it)



## TÜV SÜD CERTIFICATION

GFA System Srl is UNI EN ISO 9001:2008 certified by TÜV SÜD, ever since beside the companies in certification field. Products, fabrication as well as all kinds of processes are regularly monitored and improved in order to other high quality commodities.